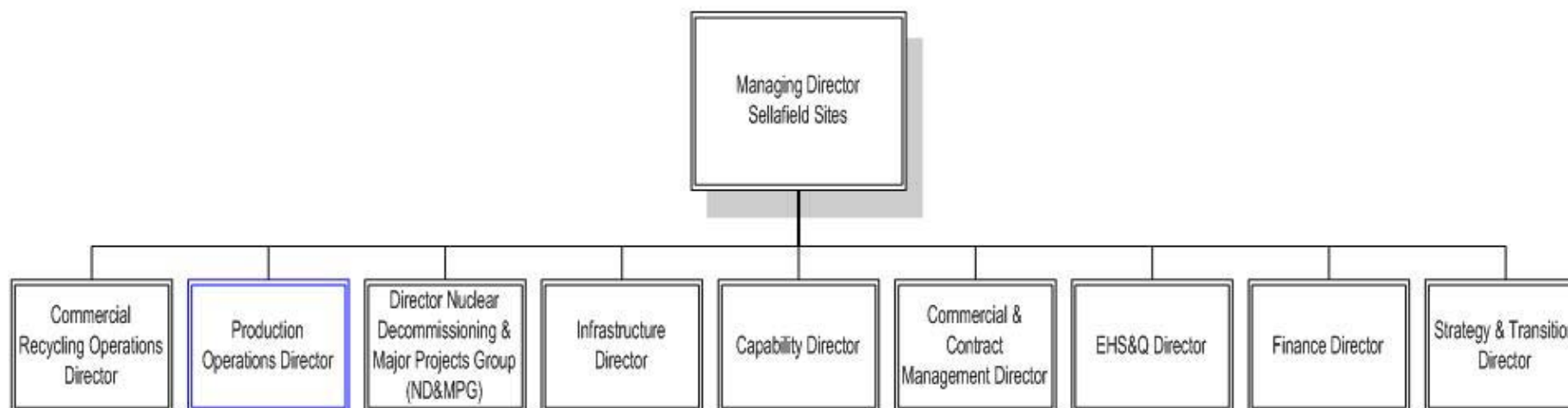


Presentation to WCSSG, Commercial Sub-Committee

John Storer, Director of Production Operations

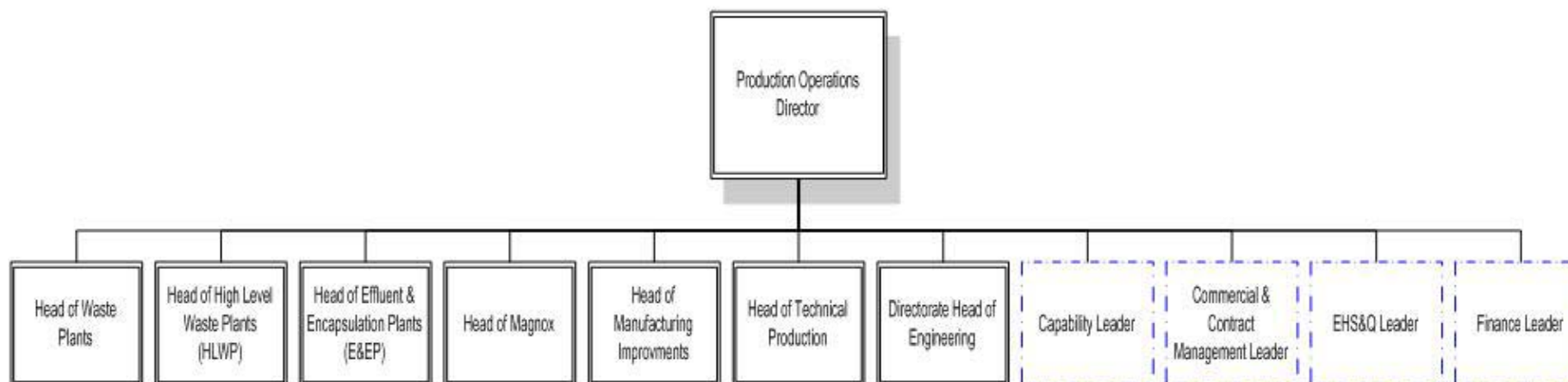
Monday 21st April

WHO ARE WE...



- Production Operations has a key role within activities undertaken at Sellafield
- Number of plants including reprocessing of irradiated fuel & waste treatment
- Manage both current arisings of nuclear material & remediation of historic material, supporting NDA strategic focus of cleaning up nuclear sites

WHO ARE WE...



- Directly employs ~ 2700 people
- The Directorate organisation is based on a model that supports delivery (through the Operating Units) & maintaining capability whilst promoting continuous improvement
- The organisation is set up to support this model with Functional Support fully aligned

OUR PLANTS & WHAT THEY DO...

Magnox Operating Unit



Comprises receipt facilities for irradiated nuclear fuel from the UK's Magnox reactor fleet, through to reprocessing facilities, and storage for the products of reprocessing. The Magnox Operating Programme (MOP) details the strategy to achieve progressive closedown of the remaining operational Magnox reactors, and emptying of the reactor cores.

Effluent & Encapsulation Plants (E&EP)



Operate facilities to treat and process liquid effluents generated across the Sellafield site prior to discharge to the environment, in line with formal discharge authorisations set by the Environment Agency and NII. Facilities are also operated which encapsulate both solid and liquid waste from reprocessing operations, into a form suitable for safe and secure long term storage. In addition to this, E&EP also recover and process historic liquid wastes stored in a number of aging storage compounds, and convert the waste into stable solid forms, contributing to the progress on site clean up.

OUR PLANTS & WHAT THEY DO...

High Level Waste Plants (HLWP)



Provide storage for highly active waste streams from both Magnox and Thorp reprocessing operations, evaporation of highly active waste to reduce storage volume, and operation of vitrification lines to convert highly active waste into a solid waste form. The HLWP operate within a Highly Active Liquor (HAL) volume reduction strategy which has as a target the achievement of "buffer" volumes of HAL by 2015.

Waste Plants



Process both Plutonium contaminated material (PCM) and low level waste (LLW) into forms which are suitable for long term passive storage or disposal. A LLW compaction plant and disposal service is operated by the unit which deals with all Sellafield site and some off site material. In addition a metals decontamination plant processes metals for recycling thus avoiding large volumes for LLW. For PCM a drum compaction plant is operated, along with a series of engineered stores, in line with a PCM strategy which aims to reduce untreated historic PCM to buffer levels by 2020.