

Evaporator D Project

West Cumbria Site Stakeholder Group

Presented by Tom McClain, Project Manager

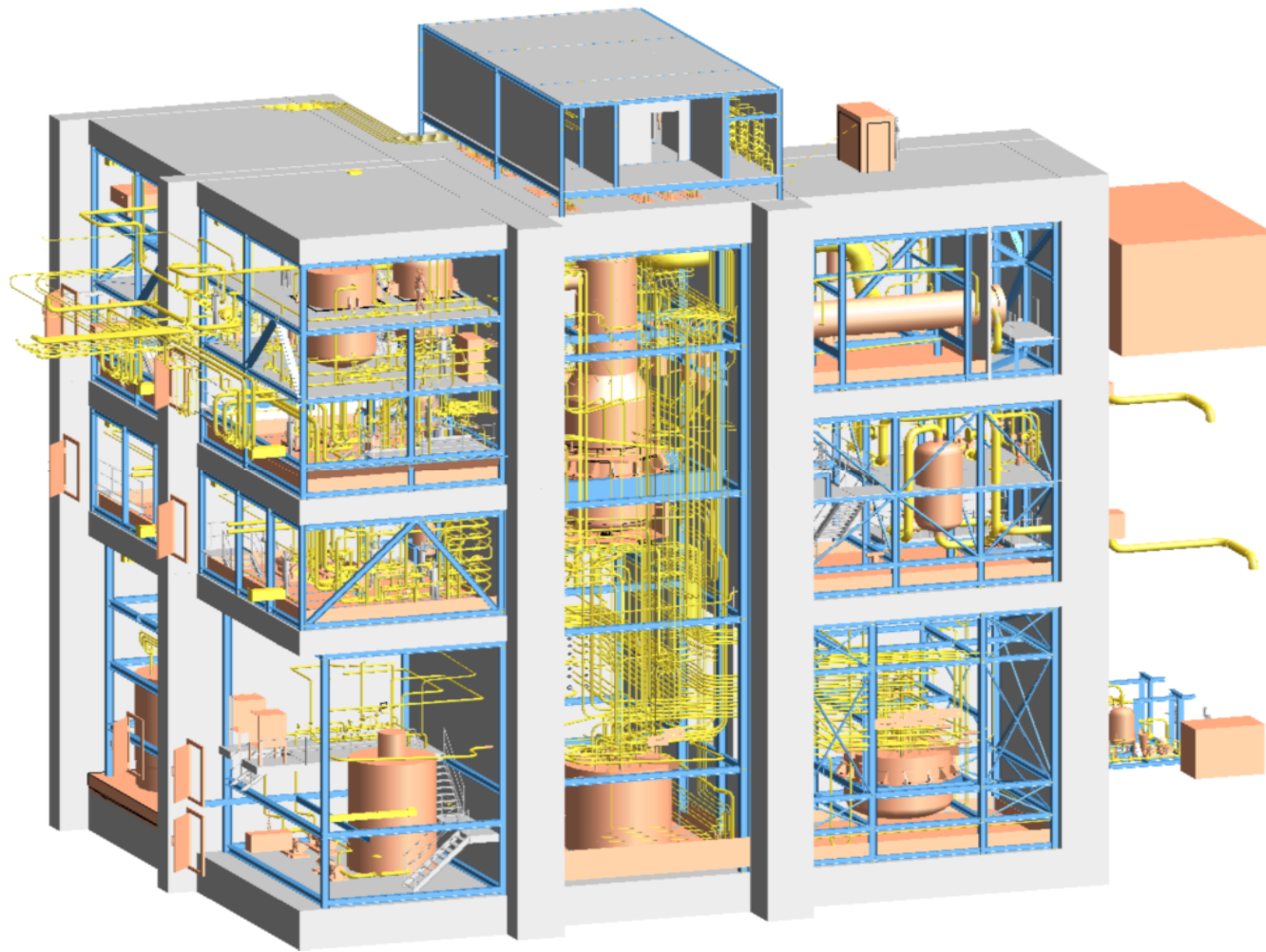
Thursday 1st July 2010

Project Requirements and Strategy

- Evaporator D is required to provide additional capacity to process highly active liquid waste
- Fabrication off-site of modules for installation into a building 'shell' enables parallel working on construction and equipment fabrication
- To delivery this strategy a significant amount of early engagement with external and internal (Sellafield) stakeholders was required (and continues to be required)

Project Approvals

- The project is sanctioned by NDA at an overall cost ~ £400M
- Approvals from NII received for construction of building
- Following optioneering of the modules (including delivery options) marine delivery of large modules was supported (required Regulator, NDA and local community buy-in).
- A large number of approvals are required for marine delivery and supporting infrastructure. This includes
 - Town and Country Planning from Copeland Borough Council (granted)
 - Water Resources Act from Environment Agency (granted)
 - Marine Consents from Marine Management Organisation (applied for)



On-Site Progress

- **First Phase of Construction Works (started May'09)**
 - Building foundations and low level walls completed in October'09
- **Second Phase of Construction Works (from mid-Nov'09)**
 - Installation of two Self-Erecting Tower Cranes
 - Construction of main building and cell walls
 - Start of structural steel work erection
- **Module Delivery (started Nov'09)**
 - Trial landings of the barge (Terra Marique) undertaken mid Dec'09
 - Temporary bridge erected over River Ehen (beams installed Feb'10)
 - Minor modifications to road outside Rail Station
 - Changes to Sellafield Access Gates (Station and WAMAC Gate)

Areas of Off-Site Fabrication

- **Module ‘parts’**
 - Examples include vessels, pipework and steelwork for frames
 - Early phase of fabrication include the Evaporator Vessel (with Bendalls, Carlisle) commenced
- **Module Assembly**
 - With Interserve (Ellesmere Port) : facility being prepared
- **Module Inter-connections (‘Wall boxes’)**
 - Connection ‘boxes’ will be cast in the concrete building shell
 - Wall boxes delivered when needed by Bendalls and Jordans Nuclear

Look Ahead – Next 6 months

- **Continuation of ‘Main Build’ construction works**
 - Retaining and Cell Wall Construction together with steelwork erection
 - Installation of Lifting Gantry
- **Marine Development**
 - Earthworks on Ehen Spit
 - Preparation of beach prior to first barge with modules
- **Module Transport Route**
 - Completion of modifications to route between River Ehen and Sellafield Site
 - Temporary Removal of significant obstacles on-site

Project Successes to Date

- 1,000,000 man-hours worked without a Lost Time Accident
- Project team is a co-located alliance of Sellafield Limited, its main contractor (Costain) and key sub-contractors
- Evaporator D Team achieved success as Project of the Year at the annual Costain Awards
- Visible on-site progress, ahead of schedule, despite working in a very confined footprint