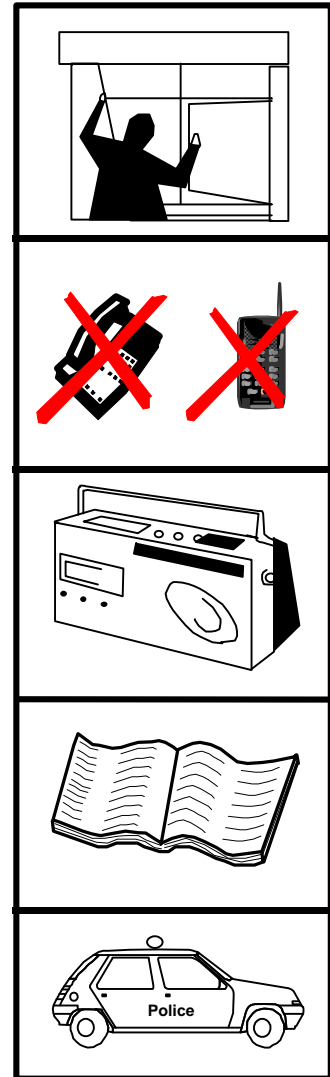


School Action Card

For use in the event of a serious emergency at Sellafield

GO IN, STAY IN, TUNE IN

- 1 GO INSIDE AND CLOSE DOORS AND WINDOWS.** Shut down ventilation and air conditioning systems.
- 2 DO NOT USE TELEPHONES** (unless you need urgent help)
- 3 LISTEN TO LOCAL RADIO**
BBC Radio Cumbria on 104.1 MHz FM 206m (1458 KHz) MW, or CFM on 103.4 MHz FM
- 4 UPDATE ATTENDANCE REGISTER**
- 5 FOLLOW EMERGENCY SERVICES ADVICE**



SIRENS

Site Incident Siren (warbling noise). If you hear the Site Incident Siren, you can carry on with your normal activities as the hazard is confined to the site.

Sellafield Emergency Siren (fog horn noise). If you hear the Sellafield Emergency Siren, go indoors, close doors and windows and follow the instructions on this card.

Dial **0800 022 4191** to hear prerecorded examples of the siren sounds.

For additional information see over



Additional Information

- **GO INDOORS AND STAY THERE**

In an emergency, the best thing to do is to go indoors where you will be protected from the worst effects of a radioactive release.

- **DO NOT ATTEMPT TO LEAVE THE AREA**

Do not try to leave the area unless told to do so by the Police. There could be serious traffic congestion and you will be much safer indoors.

- **DO NOT USE TELEPHONES (unless you need urgent help)**

In an emergency, all telephone systems may become overloaded and this may prevent emergency calls getting through. If you must make a call, please use a landline phone and be brief or send a mobile text message. Please do not make mobile telephone calls.

- **EVACUATION**

If an evacuation is required, the County Council will organise transport. All staff, pupils and any parents present must go to a Reception Centre to be registered. Take the School Register with you.

- **FURTHER INFORMATION**

- Call the Sellafield Emergency Information Line on **0808 909 8090**. Please try to use a landline phone.
- Consult the booklet 'What to do in an Emergency at Sellafield'.