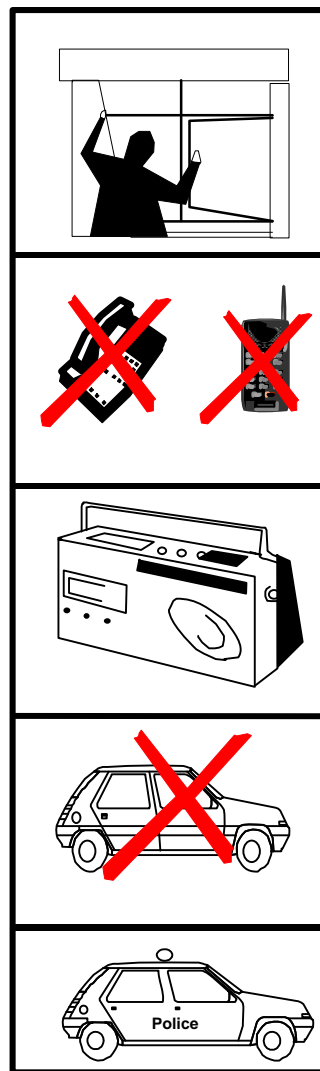


# Emergency Action Card

For use in the event of a serious emergency at Sellafield

## GO IN, STAY IN, TUNE IN

- 1 CLOSE DOORS AND WINDOWS.**  
Shut down ventilation and air conditioning systems.
- 2 DO NOT USE TELEPHONES**  
(unless you need urgent help)
- 3 LISTEN TO LOCAL RADIO**  
BBC Radio Cumbria on 104.1 MHz FM,  
206m (1458 KHz) MW, or CFM on 103.4 MHz FM
- 4 DO NOT ATTEMPT TO LEAVE THE AREA**
- 5 FOLLOW EMERGENCY SERVICES ADVICE**



### SIRENS

**Site Incident Siren (warbling noise).** If you hear the Site Incident Siren, you can carry on with your normal activities as the hazard is confined to the site.

**Sellafield Emergency Siren (fog horn noise).** If you hear the Sellafield Emergency Siren, go indoors, close doors and windows and follow the instructions on this card.

Dial **0800 022 4191** to hear prerecorded examples of the siren sounds.

For additional information see over.....



# Additional Information

- **GO INDOORS AND STAY THERE**

In an emergency, the best thing to do is to go indoors where you will be protected from the worst effects of a radioactive release.

- **DO NOT LEAVE THE AREA**

Never be tempted to leave the area unless told to do so by the Police. There could be serious traffic congestion and you will be much safer indoors.

- **SCHOOLCHILDREN**

If your children are at school during an emergency, you will naturally want to collect them as soon as possible; however, it may not be safe to do so. They will be looked after as a priority group either at the school or evacuated to a safe place where they will be looked after by the school staff and those responding to the emergency. Please listen to local radio for advice and details of the arrangements that have been made.

- **DO NOT USE TELEPHONES (Unless you need urgent help)**

In an emergency, all telephone systems may become overloaded and this may prevent emergency calls getting through. If you must make a call, please use a landline phone and be brief or send a mobile text message. Please do not make mobile telephone calls.

- **FURTHER INFORMATION**

- Call the Sellafield Emergency Information Line on **0808 909 8090**. Please try to use a landline phone.
- Consult the booklet 'What to do in an Emergency at Sellafield'.



**Resilience Unit**  
Arroyo Block, The Castle  
Carlisle, Cumbria CA3 8UR  
Tel: (01228) 815700